



RR - 40 SOLAS

4.2 m RESCUE BOAT OUTBOARD



Compact dimensions with overall length of 4,19 m.



When the boat is hoisted with its sling, the total height is 1.36 meters allowing stowed in a smaller space.



Wide and comfortable deck provided by generous beam of 2,02 m with enough space for a stretcher as requires IMO Res. MSC.226(82).



Its provided a space underdeck for stowing the fuel tank, and left more space on deck.



More reinforcement surface over tube and three lockers for stowage of materials.



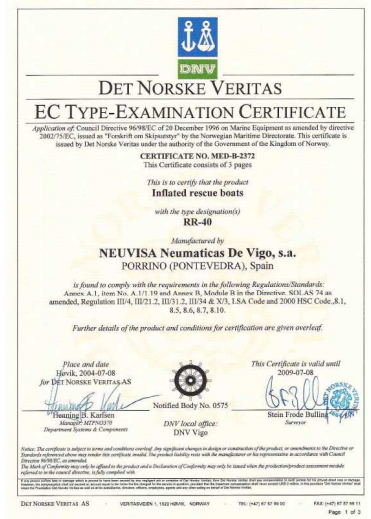
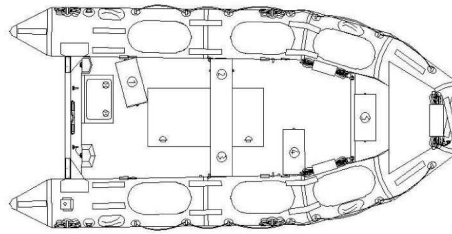
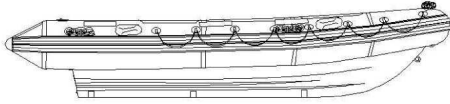
Self righting system on both sides of the tube.

This compact Rescue Boat is specifically designed for life-saving and working purposes within the shipping and offshore industries. It features a compact semi-rigid version of fiberglass reinforced polyester resin (FRP) and an inflatable collar. Foam sandwich construction makes this boat absolutely un-sinkable.

Capacity: seats 5 persons + 1 person lying down.

The boat is powered by an outboard motor with a rating of 17 kW (25 h.p.) up to a maximum of 29.4 kW (40 h.p.).

The boat is approved in compliance with SOLAS 74, Chapter III as amended, LSA Code as amended, 2000 HSC Code and DNV Rules for Certification of Lifeboats 2007. Tested according to IMO Res. MSC81(70).



NEUVISA 4.2 OUTBOARD

Technical Data:

OUTBOARD version 6 person rescue

Dimensions:	
Total L x B x H (m):	4.19 x 2.02 x 0.54
Weight of boat, fully equipped:	416 kg
Maximum load (persons):	495 kg
Weight of boat, fully manned:	911 kg
Distance from keel to lifting point:	1.36 m
Endurance, fully loaded:	4 hours
Speed, with 6 persons (25 HP):	15 knots
Approved engine power, min – max:	25 HP - 40 HP (Outboard petrol engine)
Max weight of engine:	106 kg
Engine Shaft Type:	L
Bollard pull 25 hp:	Can tow 25 person liferaft
Bollard pull with 40 hp*:	Can tow 105 person liferaft 3,53 kN*

*Results obtained using the following combination:
Engine Yamaha 40 HP // Propeller 3 x 13 1/4 x 10

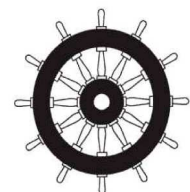
Equipment:

Hoisting sling	First-aid outfit *
Release device with painter 50 m.	Righting eye with line (4 units)
Buoyant rescue quoits with 30 m line (2 units)	Sea-anchor
Radar reflector	Painter 15 m line.
Waterproof electric torch with spare parts.	Battery
Buoyant bailer	Foot pump
Sponges (2 units)	Buoyant safety knife
Safety boat-hook	Whistle
Buoyant oars (2 units)	Repair kit.

Wheelmarked Equipment

Reflective tape.	Compass.
Position indicating light.	Fire-extinguisher (2 kg)
Thermal protective aids (2 units)	Searchlight

* Type approved in accordance with LSA Code & SOLAS 74



001